

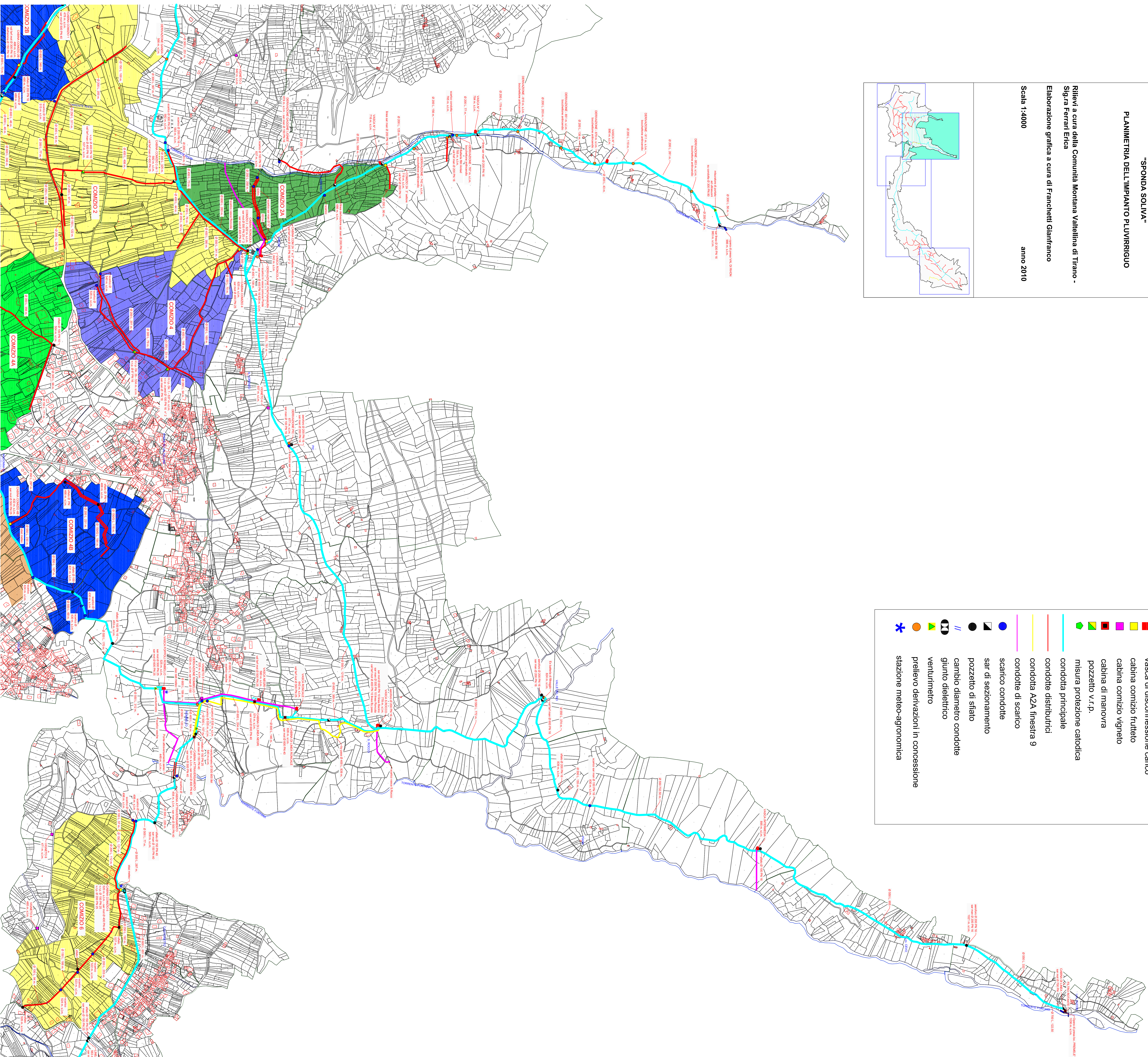
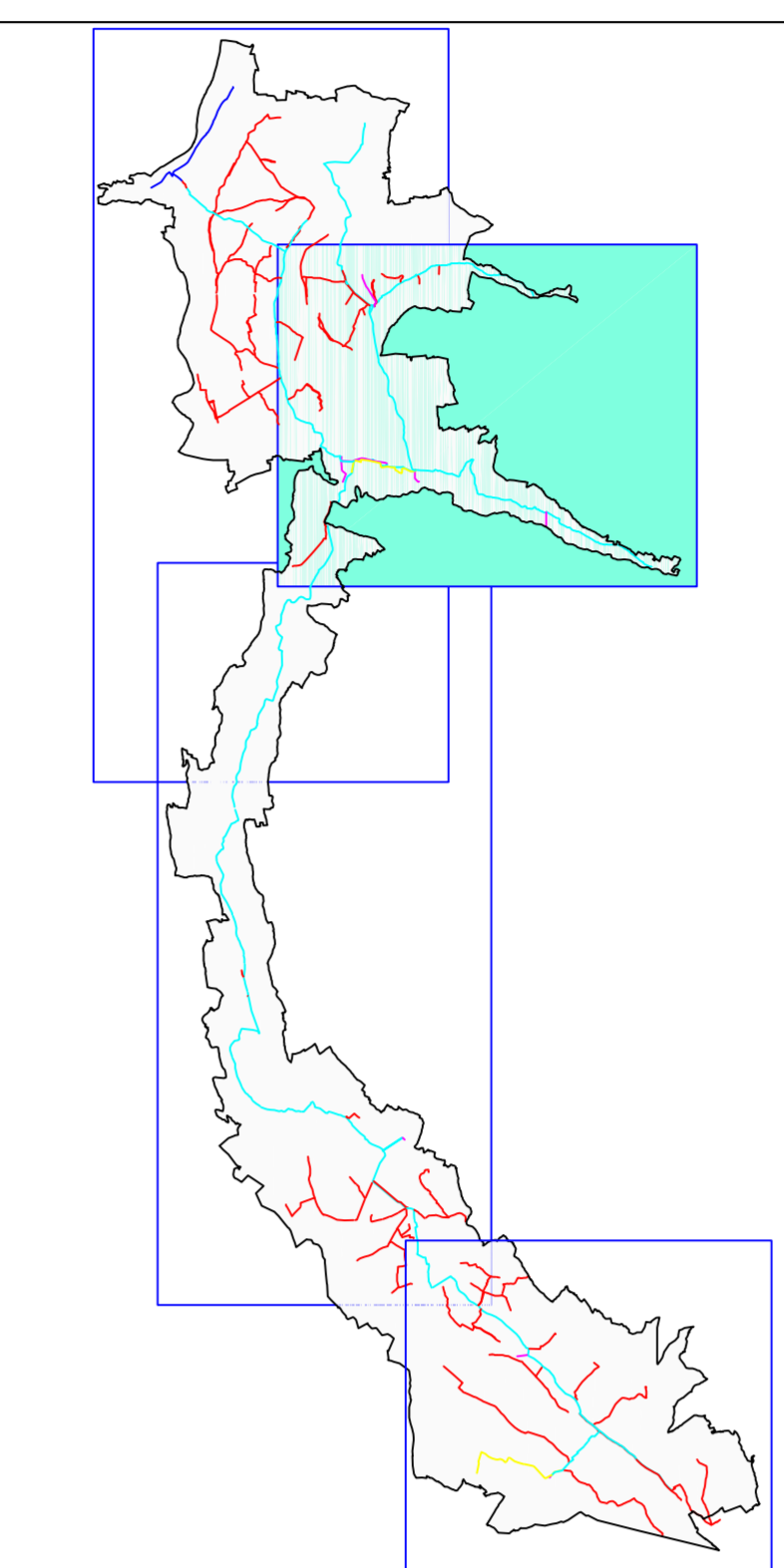
**CONSORZIO DI M.F.  
"SPONDA SOLIVA"**  
**PLANIMETRIA DELL'IMPIANTO PLUVIRRIGUO**

Rilievi a cura della Comunità Montana Valtellina di Tirano -  
Sig.ra Ferrari Erica


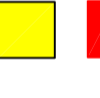
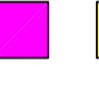


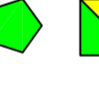
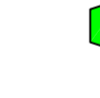


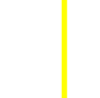
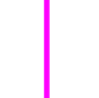
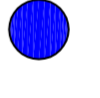


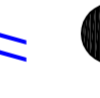


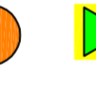
Elaborazione grafica a cura di Franchetti Gianfranco

Scala 1:4000

anno 2010



**LEGENDA**

-  vasca di disconnessione carico
-  cabina comizio frutteto
-  cabina comizio vigneto
-  cabina di manovra
-  pozzetto v.r.p.
-  misura protezione catodica
-  condotta principale
-  condotte distributrici
-  condotta AZA finestra 9
-  condotte di scarico
-  scarico condotte
-  sar di sezionamento
-  pozzetto di sfiato
-  cambio diametro condotte
-  giunto dielettrico
-  venturimetro
-  prelievo derivazioni in concessione
-  stazione meteo-agronomica